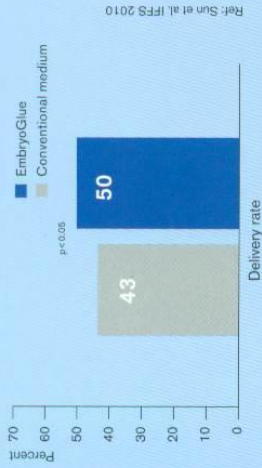
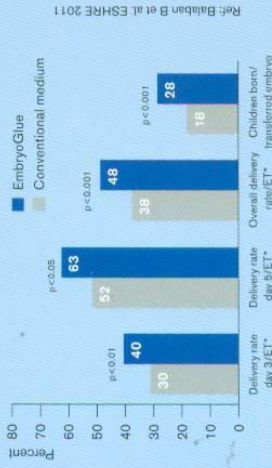


### More children born with EmbryoGlue®



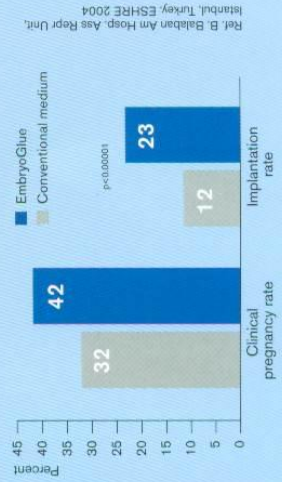
Retrospective study 2004-2008 comparing EmbryoGlue® with a conventional medium as transfer medium for ~1300 patients.

### And more children



Follow-up study of the study below showing significantly more children born after the use of EmbryoGlue for embryo transfer. For all patients regardless of infertility cause.

### EmbryoGlue® significantly increases implantation rates in patients with previously failed implantation.



A breakthrough in ART  
**EmbryoGlue®**  
Implantation promoting medium

Rx only. 510(k) clearance. **CE** 0434  
For prescription use only.

Patent No. US 6,838,235, Patent No US 6,762,053, Patent No. NZ523481

This brochure contains information regarding various tests and clinical trials relating to EmbryoGlue®. This information on tests and clinical trials relating to EmbryoGlue® is only a summary provided for information purposes about EmbryoGlue®. The information is provided "as is" without any warranties, expressed or implied, including but not limited to the implied warranties of suitability or eligibility for a particular purpose and/or success of treatment on an individual basis. This information should not be considered as complete nor is it a substitute for the advice of your physician. Therefore, it is important to discuss the included information with your physician.

Moreover, this brochure contains information relating in particular to health, suitability, the medical domain and various kinds of medical treatment reserved exclusively for use by human beings. This is for information purposes only and is not meant to be a substitute for the advice provided by your own physician or other medical professionals.

You should always consult your own physician regarding any questions about EmbryoGlue® you have especially the benefits and risks relating to the treatment and use of EmbryoGlue®.

**Vitrolife**

www.vitrolife.com

Box 9080, SE-400 92 Göteborg, Sweden

# HAVE YOU HEARD ABOUT EMBRYOGLUE?

The new medium for  
enhancing implantation.

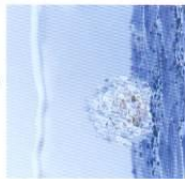
**Vitrolife**

### What is EmbryoGlue®?

EmbryoGlue® is a product developed to closely resemble the environment in the uterus at the time of implantation. It is not a glue in the common sense, but acts as a glue by increasing the chance of implantation of the embryo to the uterus.

EmbryoGlue® is enriched with the carbohydrates and amino acids needed to support the embryo during transfer and implantation.

It has a relatively high concentration of hyaluronan and also contains the safest protein source available, i.e. recombinant albumin.



### What is Hyaluronan?

Hyaluronan is a natural substance abundant in all tissues in the body, and the levels of hyaluronan increase in the uterus at the time of implantation.

The uterine wall and the embryo have receptor sites for this molecule. It is thought that the hyaluronan in EmbryoGlue® acts like a bridge between the embryo and the uterus, having a glue-like effect.

Also, the higher concentration of hyaluronan thickens the solution to be more similar to the consistency of the fluids in the uterus. This allows better mixing of the medium and uterine fluids and is believed to minimize drifting of the embryo.

### What is recombinant albumin?

Recombinant albumin is another important ingredient in EmbryoGlue®. It is not derived from any human or animal products like most other albumin sources. This provides a high level of safety for the mother and the future baby by eliminating any risk of cross contamination.

### Who should use EmbryoGlue®?

All patients going through IVF procedures that result in a transfer can benefit from EmbryoGlue®. A literature study by the independent research institute "Cochrane Collaboration" covering all published results on the effects of increased hyaluronan during embryo transfer shows an increase in implantation rate compared to embryo transfer without hyaluronan. EmbryoGlue® is the only product available that is enriched with hyaluronan. Other studies have demonstrated a significant increase in the number of babies brought home for couples with a wide range of

infertility diagnoses. EmbryoGlue® has been shown to be especially beneficial for patients above the age of 35, patients with previously failed implantation, and patients with unexplained infertility.

If you have questions about EmbryoGlue® or want to know if EmbryoGlue® is suitable for you, please ask your doctor.

### Closer to Nature

Today, researchers have provided a better understanding of the physiological needs of gametes and embryos. By designing culture media that resembles the changing environment of the female reproductive tract, we are able to optimize the development and health of the embryos.

EmbryoGlue® is an important part of the G-Series™ and is created by learning from the embryo and the mother.

